

PRO - AV

HI-END SERIES



HIGH-END DIGITAL SIGNAGE SYSTEM



Why choose ANGUSTOS Pro-AV ?

We can provide you the best solution that suits your TVs, interactive screens, meeting room high-end projector, digital signage and videowall system. We do not just simply sell the equipments but also a smart solution that is just as well designed as it is functional. Solutions that guarantee and define our.

brand:

- Ease-of-use
- Design
- Innovation
- Reliability
- Ease-of-installation.

To help you find the exact solution you need, Angustos has an extensive product range that is possible to compose a solution for nearly every Pro AV application. Our highly skill solution teams are happy to help you to quickly find the best solution for your installation, saving you the time and effort and hassle for complex system.



ANGUSTOS PRO AV APPLICATIONS

- Media-Telecom - Broadcast
- Education - Training
- Manufacturing - Quality Control
- Retail - Advertising
- Meeting Room - Conference
- Healthcare visual system
- Entertainment
- Government - Control Room



HDMI to HDMI Extender Wireless Dongle - 30 meter

Model : AVE-HW30D

FEATURES

- Transmit wireless video signal up to 30 meters.*
- Uncompressed audio and video at near-zero latency.
- Resolutions up to 1920 x 1080 @60Hz
- Each RX paired to the unique TX. Plug & Play.
- Private wireless signal (do not need Wi-Fi).
- HDMI to HDMI auto EDID / Scaler
- Do not need to install application on mobile / PC
- Pixel Clock 165Mhz . Data Rate 6.75 Gbps

**Wireless transmission distance is greatly affected by environmental factors.*

SPECIFICATION

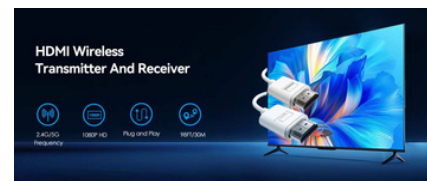
Operating Temperature	0o to 60oC
Operating Humidity	0 to 90%RH
Video Input Connectors	1 x HDMI Type A 1 x USB Type A (Power)
Video Output Connectors	1 x HDMI Type A 1 x USB Type-A (Power)
Data Rate / Pixel Clock	6.75 Gbps / 165MHz
Resolution Support (max)	1920x1080p@120Hz
Transmission Frequency	2.4G / 5 G - Private



Wireless



Private Link



30m

Transmission POV	1800
Delay Power /	5 - 20ms depend on range
Consumption	DC 5V - 600mA / 3W
Transmission Range	20-30m open area
Range is limited with obstacles in room	

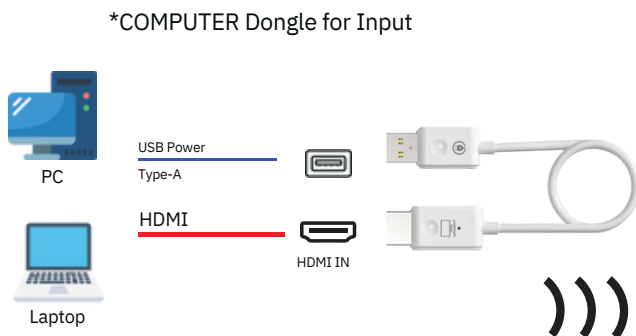
Package include

- * Receiver (RX) x 1
- * Manual x 1

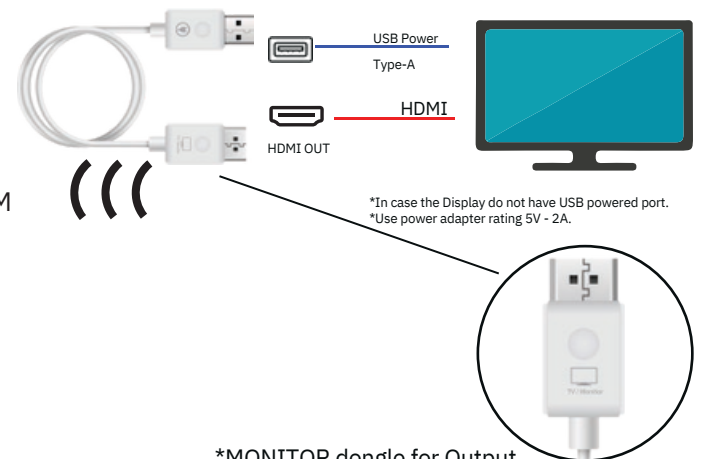
- * Transmitter (TX) x 1

CONNECTION DIAGRAM

INPUT



OUTPUT



*MONITOR dongle for Output